

Port of Brighton



PORT INFORMATION GUIDE



Introduction

Welcome to the Port of Brighton, LABIDCO.

We firstly wish to thank you for choosing our port facility and services. Our goal is to ensure your experience is satisfactory to you and worth repeating as we set out to deliver a service that is safe, productive and of high value to you.

This booklet is intended as reference guide to port users including masters of seagoing vessels, shipping lines, shipping agents and port tenants. It outlines key port information, nautical information as well as our scope of services. The general directions enclosed aims to ensure the safe movement of vessels, people and equipment within the Port of Brighton and the procedures in place for accessing the port's services.

Please feel free to contact us for any additional information or questions you may have. We look forward to serving you.





Contact Information

The Port & Marine department is the primary point of contact for shipping operations. The department can be contacted via its general email: brightonmarine@ngc.co.tt or via telephone by calling: **1 868 710 1493** or **1 868 303 1232**.

Office Address:

La Brea Industrial Development Company Ltd (LABIDCO) Estate
Corridor Road Extension
Brighton Port, Material Storage & Handling Facility La Brea Industrial Estate
Brighton, La Brea.
Tel: (868) 648-8488, 8884
Fax: (868) 648-9319

Key Contact Persons

General Manager, LABIDCO
Wendy Seow

La Brea Office No. 868-648-8884/8488 ext. 250
Mobile No. 868-336-4081
Email: wseow@ngc.co.tt

Team Lead - La Brea Operations
Terrence Boodoosingh

La Brea Office No. 868-648-8884/8488 ext. 231
Mobile No. 868-346-6447
Email: t.boodoosingh@ngc.co.tt

Port & Marine Department

Senior Marine Officer
Dahlia John

*La Brea Office No. 868-648-8884/8488 ext. 228
Mobile No. 868-710-1493
Email: d.john@ngc.co.tt*

Marine Officer
Joel Cole

*La Brea Office No. 868-648-8884/8488 ext. 227
Mobile No. 868-303-1232
Email: joel.cole@ngc.co.tt*

Construction Technician
Gary Sylvester

*La Brea Office No. 868-648-8884/8488 ext. 227
Mobile No. 868-365-0313
Email: gary.sylvester@ngc.co.tt*

Health Safety & Environment

Health & Safety Officer
Trevon Arnold

*La Brea Office No. 868-648-8884/8488
Mobile No. 868-491-4010
Email: t.arnold@ngc.co.tt*

Port Security Department

Team Lead, Surveillance Operations
Kelvin Metoo

*La Brea Office No. 868-648-8884/8488
Mobile No. 868-734- 5414
Email: kelvin.metoo@ngc.co.tt*

Other Important Contacts

Customs Office – La Brea

Tel No. 868 – 289 -2479

Email: customsptfortin@customs.gov.tt

Port Health Office

Tel No. 868-285-8993/868-304-9467

Pilot Office

Tel No. 868- 625-1145

dispatch@ttmarinepilots.com

Towage Service

Tel No. 868 – 636-8847

necmarine@nationalenergy.tt



Port Description

Name of Port	Port of Brighton
Type of Port	Multi- Purpose Berth Facility
Port Location:	Port of Brighton is located on the south west of the island of Trinidad the LABIDCO industrial estate, La Brea. The ports which are managed by the La Brea Industrial Development Company Limited, comprises of berths 1, 2 and 3 with lengths overall of 60m, 300m and 300m respectively.
Port Position:	Latitude 10°15'N - Longitude 61°38'W
Time Zone:	Atlantic Standard Time (GMT-4)
Anchorage Position	Latitude 10°16'17"N - Longitude 61°39'85"W
Pilot Station	Latitude 10°17'N - Longitude 61°40'W
British Admiralty Charts	Charts to be used for approaches and entry BA #475 and BA #483
Call Sign/ Name	9YR20 /BrightonMarine
Working VHF Channels	16 / 11

Harbour Channel & Turning Basin

Length of Channel	650 m
Width of Channel	150 m
Diameter of Turning Basin	500 m
Available Drafts (Chart Datum)	12.8 m
Average Height of Dock above Waterline	4.0 m
Mean Tidal Variation	1.0 m
Berthing Velocity	0.17m/s
Approach Angle	10°

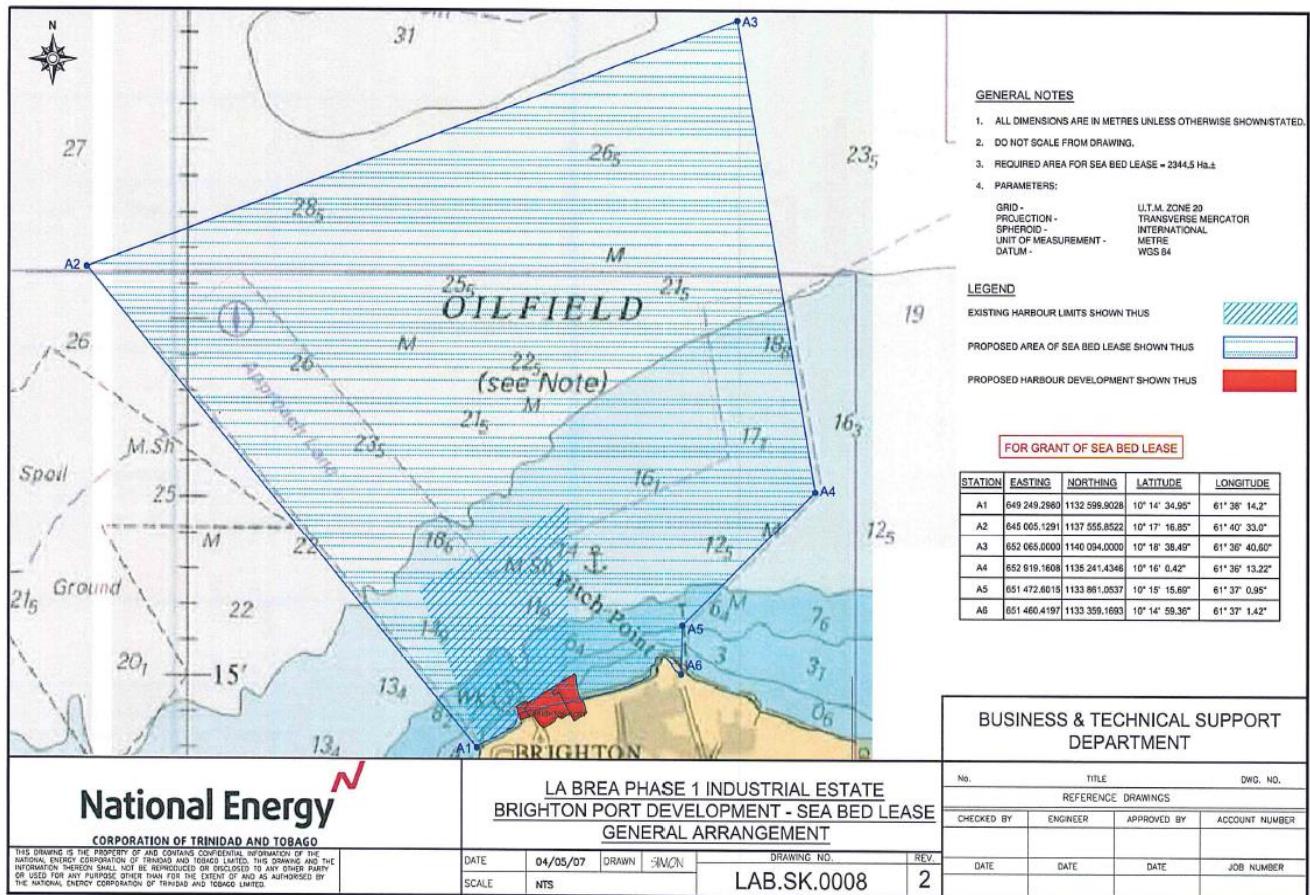
Weather / Tidal information

Weather forecasts and tidal information are provided by the Trinidad and Tobago Meteorological Services. Click on the link <http://www.metoffice.gov.tt/forecast> for up to date weather information.

Harbour Limits

STATION	EASTING	NORTHING	LATITUDE	LONGITUDE
A1	649 249.2980	1132 599.9028	10° 14'34.95"	61° 38'14.2"
A2	645 005.1291	1137 555.8522	10° 17'16.85"	61° 40'33.0"
A3	652 065.0000	1140 094.0000	10° 18'38.49"	61° 36'40.60"
A4	652 919.1608	1135 241.4346	10° 16'0.42"	61° 36'13.22"
A5	651 472.6015	1133 861.0537	10° 15'15.69"	61° 37'0.95"
A6	651.460.4197	1133 359.1693	10° 14'59.36"	61° 37'1.42"

Diagram showing Port of Brighton Harbour Limits



Navigational Aids

	Description	Latitude	Longitude	Location (Sailing)
Channel Marker #1	Green	10°15'19.200"N	61°38'15.623" W	Channel Entrance
Channel Marker #2	Red	10°15'16.272"N	61°38'19.797" W	Channel Entrance
Channel Marker #3	Green	10°15'19.08.228"N	61°38'02.061" W	Intermediate/Turn Basin Starter
Channel Marker #4	Red	10°15'03.746"N	61°38'03.077" W	Intermediate/Turn Basin Starter
Channel Marker #5	Green	10°15'08.192"N	61°37'53.660" W	Intermediate/Turn Basin Mid
Channel Marker #6	Red	10°15'14.49.900"N	61°38'02.684" W	Southwest End of Berth 1
Channel Marker #7	Green	10°15'05.035"N	61°38'15.623" W	East Turn Basin End
Channel Marker #8	Red	10° 14'49,7"N	61° 38'02.9"W	
Front Leading Light Tower		10°14'41.8"N	61°37'33.2" W	Front Tower
Rear Leading Light Tower		10°14'39.5"N	61°37'30.3" W	Rear Tower



General Information

- **NOTICES TO MARINERS**

Notices to Mariners are issued by the Maritime Services Division of Trinidad. Masters of vessels are required to observe these notices

[Navigational Warning - 023-19](#)

[Navigational Warning - 024-19](#)

[Navigational Warning - 025-19](#)

[Navigational Warning - 026-19](#)

- **HARBOUR NOTICES**

Harbour notices are issued by LABIDCO to advise on specific conditions / activities within the harbour that may affect navigation.

- **LOCAL HOLIDAYS**

New Year's Day	January 1st
Spiritual Baptist Shouters' Liberation Day	March 30th
Good Friday	As declared
Easter Monday	As declared
Indian Arrival Day	May 30th
Corpus Christi	As declared
Labour Day	June 19th
Emancipation Day	August 1st
Independence Day	August 31st
Republic Day	September 24th
Christmas Day	December 25th
Boxing Day	December 26th
Divali	As declared
Eid ul Fitr	As declared

- **WORKING HOURS**

24 hours per day / 365 days per year

On holidays observed, all labour will be supplied at overtime rates.

- **BERTHING /UNBERTHING RESTRICTIONS**

Nil - Locally droghing Platform Supply Vessels

Daylight berthing/unberthing only - All other vessels

- **PILOTAGE**

Compulsory pilotage. Pilot service provided by the Trinidad and Tobago Pilots Association. Vessel's agent is responsible for arranging pilot.

- **TOWAGE**

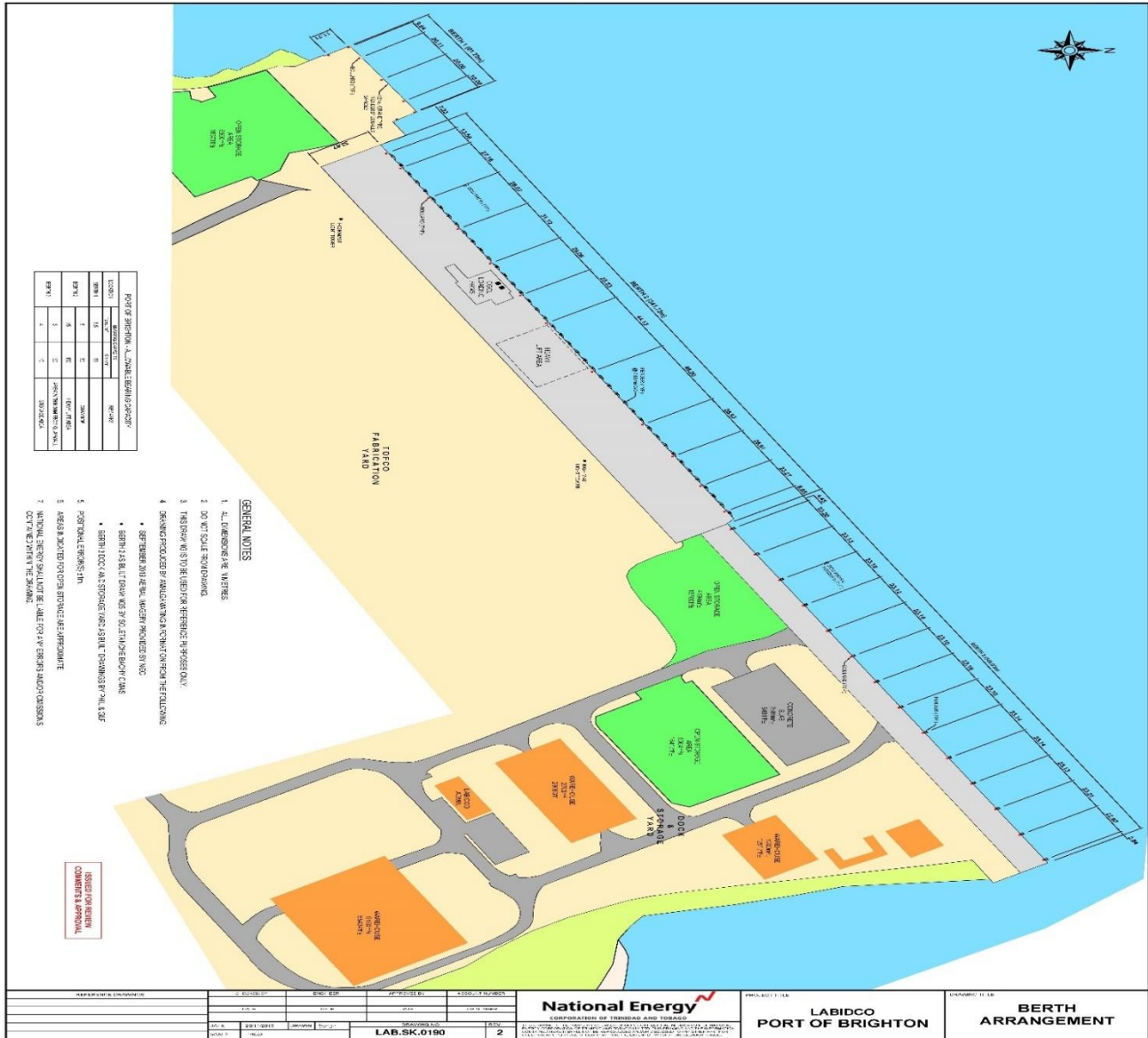
Confirmation of tug requirement to be provided by Pilots. Towage services supplied by National Energy. Vessel's agent is responsible for arranging tugs.



PORT INFRASTRUCTURE & BERTHS

■ BERTH LAYOUT

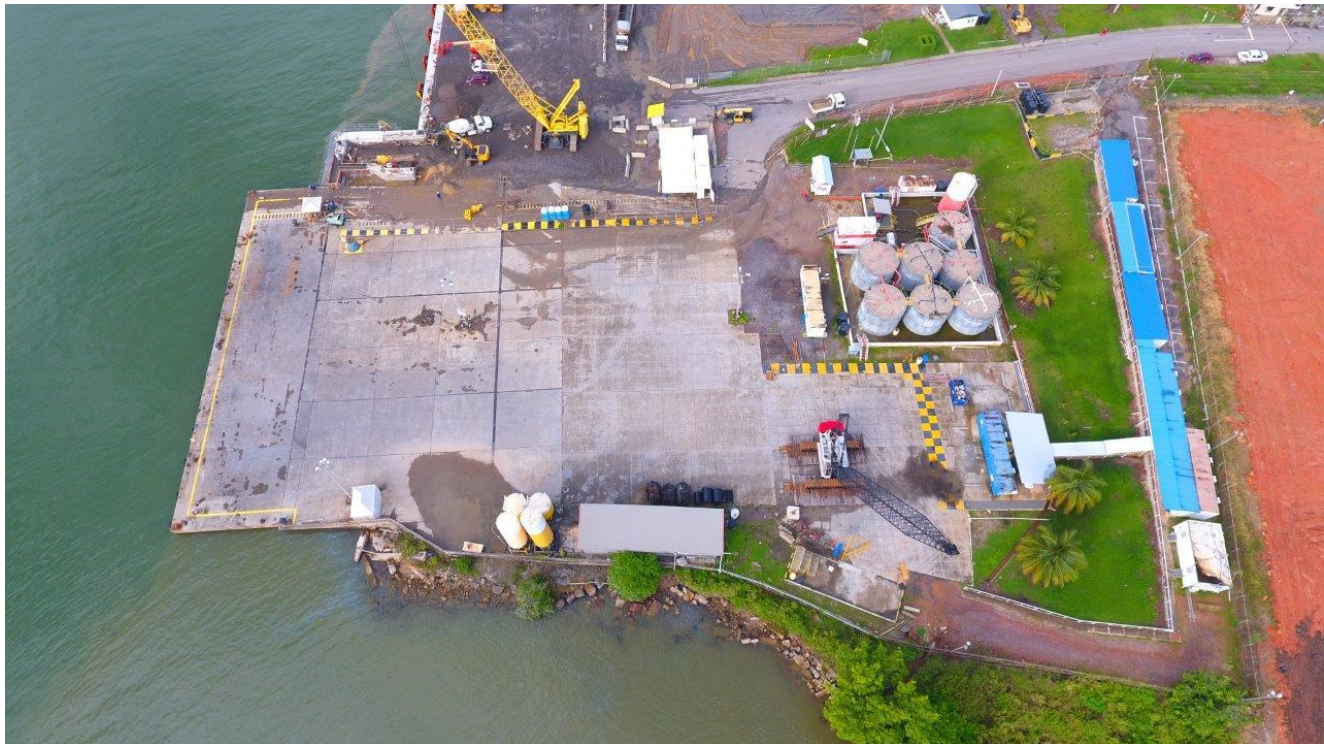
[\(Click here\)](#)



Berth Specifications

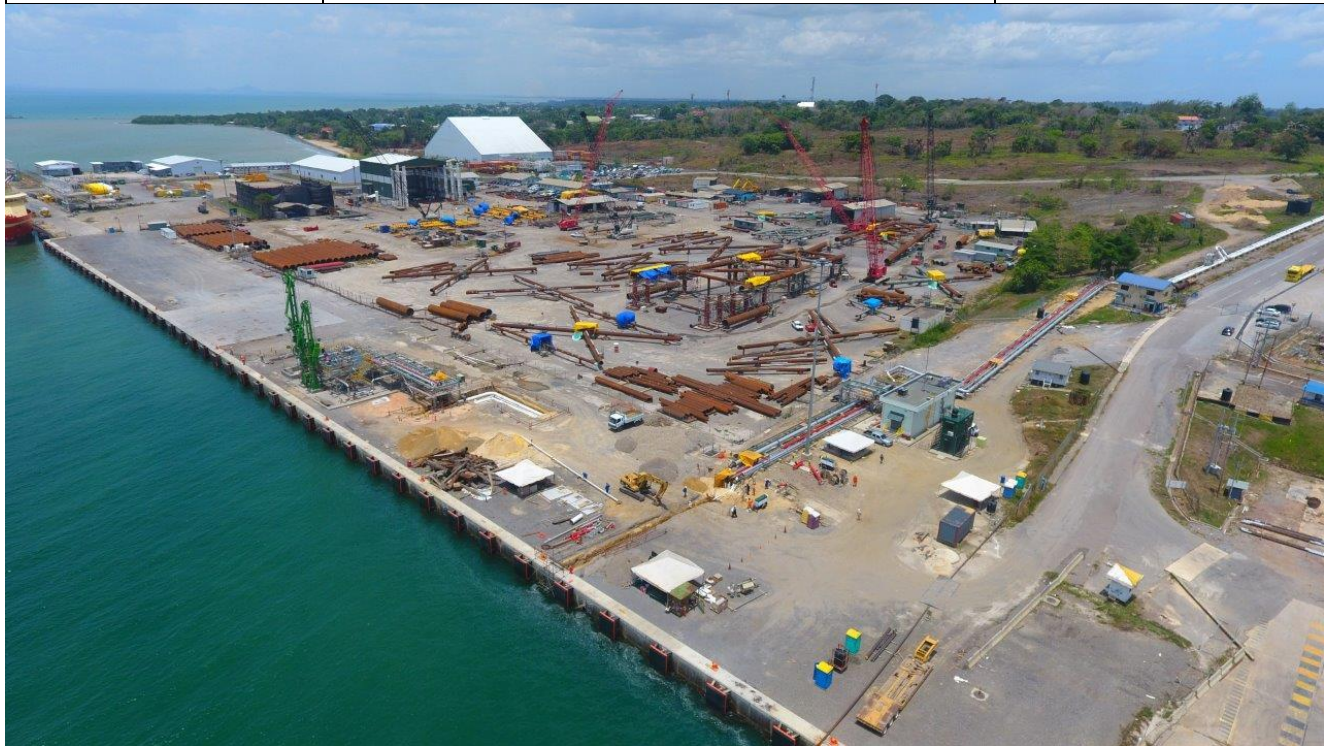
Berth No. 1

PORT FACILITY	CAPACITY	
Berth Layout	Length of Dock	60m
	Width of Dock	30m
	Maximum DWT of Vessel	18,000 DWT
	Length of Vessel that can be accommodated	90m
	Depth of Water	8.0m (CD)
	Available Draft	7.2m
	Load Bearing Capacity	5.5 Tonnes/m ²
Temporary Storage	Marshalling Area	5000 m ²



Berth No. 2

PORT FACILITY	CAPACITY	
Berth No. 2	Length of Dock Maximum Length of Vessel Maximum Width of Vessel Beam Depth of Water Available Draft alongside Panamax Sized Vessels Load Bearing Capacity (general area) Load Bearing Capacity (heavy loadout area) Heavy Loadout Area Height of Dock from Waterline	354m 242m 32m 12.8m (CD) 11.59m 52,400 DWT 5 Tonnes/ m2 15 Tonnes/ m2 39 m x 29m 4.0 m
Temporary Storage	Marshalling Area Quayside Storage	3000m2



Berth No. 3

PORT FACILITY	CAPACITY	
Berth No.3	Length of Dock	307 m
	Maximum Length of Vessel	190 m
	Depth of Water	9.8 m(CD)
	Maximum DWT of Vessel	30,000 Dwt
	Dock Strength- Load Bearing Capacity (general area)	3 tons/m ²



BOLLARDS & FENDERING

Berth 1

Fenders - Element V Fenders with a UHMW- PE shields supplemented by pneumatic tyres.
Tee type bollards.

Berth 2

Fenders – Shebata FE Element Fenders with fully molded rubber legs and embedded mounting plates.
Staghorn type bollards with maximum bollard rating of 100 tons

Berth 3

Fenders – Yokohama Fenders caged with chain of dimension 3.5 Metres x 2.0 Metres. Tee - type bollards.

PORT FACILITIES & SERVICES

Storage

Open Storage

- Berth 1 - 5000 m² / 53,819.55 sq. ft.
- Berth 3 - 3000 m² / 32,291.73 sq. ft.
 - 2588 m² / 27,857.00 sq. ft
 - 3750m² / 40,364.70 sq.ft

Warehouse

- Rousillac Warehouse – 2,592 m² / 158.34 m distance from Quayside to Berth
- Sobo Warehouse – 6,874.56 m² / 279.47 m distance from Quayside to Berth
- Vessigny Warehouse – 1,200 m² / 95.85 m distance from Quayside to Berth

Customs, Immigration & Port Health

- On site Customs Office- available 24 hrs
- On Call Immigration Officer
- On call Port Health Officer

Stevedoring Services

- 24 hrs Availability
- Qualified, experienced longshore men
- Over 15 years in handling heavy lift cargo, project and break bulk

Other Support Services Available

Supplied via third party providers. Service providers must first be registered by LABIDCO in order to perform specialized services

- Welding / Fabrication - TOFCO
- Bioremediation Services
- Domestic Garbage / International Garbage
- Oily Waste / Sewerage Waste
- Ship Chandlery
- Ship Brokerage
- Rental of Equipment and Machinery
- Ship Repairs (fabrication & maintenance)
- Tank Cleaning/Chemicals based on MSDS
- Crew Transportation



PORT ENTRY REQUIREMENTS - Ship

1. Vessels seeking entry to the Port of Brighton must have prior approval from port operator, LABIDCO.
2. Vessels must be represented by a local agent.
3. Submission of a Berth Application Form. Click [here](#) for the Berth Application Form. Email the completed berth application to brightonmarine@ngc.co.tt
4. A signed Berth User Agreement and payment in full as provided in Payment Advice prior to berthing.
5. Submission of the required documentation

Documentation

Documentation required prior to port entry	
	Yes / No
1. Port Approval	
- Endorsed Berth /Spot User Agreement	
- Endorsed Payment Advice and Payment in Full	
2. Pre-Arrival Information	
- Last 10 Ports of Call	
- Crew List & Passenger List	
- Any Ship to Ship activities within the 2 months	
- Maritime Declaration of Health	
- LABIDCO Health Declaration for Vessel (COVID-19 measure)	
- Pratique Clearance issued by Local Port Health Officer (Non -Droghing Vessels)	
- Dangerous Goods Declaration	
3. Ship Particulars	
- Certificate of Registry	
- Certificate of Droghers & License to Navigate coastwise	
- International Tonnage Certificate	
- International Load Line Certificate	
- Certificate of Class	
- Certificate of Fitness	
- Certificate of Insurance	
- Intertanko Chartering (Q88) (Chemical Tankers)	
3. Cargo Information	
- Bill of Lading	
- Cargo Manifest	
- Stowage plan	

- Certificate of Inspection for lifting, rigging gears (ship / shore crane	
- Insurance and operators certificates – Shore crane. forklifts	
- Port approved Heavy Lift plan for cargo > 40 mt	
- Customs Approval Letters	
- Method Statements, Risk Assessment, Job Hazard Analysis	
Documentation to be available on-board vessel	Yes / No
- Valid International Ship Security Certificate	
- International Oil Pollution Prevention Certificate	
- Garbage Record Book	
- Ship Security Plan	
- Last Port State Control Report	



PORT ENTRY REQUIREMENTS - Shore

The Port of Brighton is a compliant ISPS, customs bonded facility and accordingly operates within the parameters of the ISPS Code with controlled access to the port facility.
All personnel/vehicles must obtain access approval prior to entering the port's compound.
The Port Facility Security Officer or designate is responsible for approving Port Access Requests for personnel and vehicles.

Requirements for Port Entry -:

- a) An approved Port Access Request
- b) An approved LABIDCO Health Declaration Form (New)
- c) Port of Brighton Site Induction
- d) One Form of National Identification – for the drivers of vehicles – valid forms of drivers permit and vehicular insurance
- e) Additional Requirements for Berth 2 – Access
- f) Certificate of Character (Nationals of Trinidad and Tobago)
- g) Work Permit (Non-nationals)
- h) Personal Protective Equipment (PPE)

1. Port Access Requirements for Personnel

- 1.1 For the purposes of security control, port tenants are required to identify a maximum of three (3) persons within their organization authorized to submit port access requests.
- 1.2 Applications for port access must be submitted at least **24 hrs** in advance and **48 hrs** for weekend/public holidays.
- 1.3 Requests for port access must be completed on the prescribed Port of Brighton Port Access Template - [click here for template](#)
- 1.4 Email a soft copy of the Port Access Request to brightonmarine@ngc.co.tt
The processing of applications will be done on weekdays at 1400 hrs daily. Applications submitted after 1400 hrs will be processed the following day
- 1.5 A notification will be subsequently issued by LABIDCO to indicate that approval was granted, denied or that additional information is required.

2. LABIDCO Health Declaration Form

- 2.1 Visitors to Port of Brighton Facilities are required to complete a Health Declaration Forms no less than **24 hours in advance** of arrival to the port
- 2.2 The form is to be completed online and can be accessed here - [NGC Health Screening Forms – Visitors](#).
The below link can be shared with sub-contractors to facilitate completion of the forms from mobile devices.
<https://forms.office.com/Pages/ResponsePage.aspx?id=dBT284o0dkul2ZnilwPGZk2TtHK0fxVBn-UsmFfWqdUMDBKUjNSTThKUzY4TktHTkFISFIBVTRZWS4u>

3 Site Induction

- 3.1 All port tenants and port user are required to undergo an annual port familiarization exercise prior to being granted access to any work site within the Port of Brighton.
- 3.2 Port familiarization sessions will be conducted at 0830 hrs on Wednesdays and Thursdays online via Microsoft Teams
- 3.3 To schedule the site induction kindly contact HSE Advisor – Trevon Arnold at T.Arnold@ngc.co.tt

4. National Identification Card

- 4.1 All persons are required to present one form of national identification as stated on the Port Access
- 4.2 IDs are to be presented to security personnel upon arrival at entry points (Gate A/ Gate B).
- 4.3 Personnel on site must carry a photo ID at all times.

5. Work Permits for Non-nationals

- 5.1 Non-nationals arriving to conduct work at the port must provide a work permit.
- 5.2 Work permits are not required for visits to the port for the purposes of site visits, meeting or for consultancy work.

6 Additional Requirements for Berth 2

Persons or vehicles seeking access to Berth 2 are required to satisfy the additional access and safety measures

- 6.1 Approved Vehicle Inspection – [Click here for Vehicle Inspection Checklist](#)
- 6.2 No cell phones, lighters, matches, cigarettes, jewelry or other non-intrinsically devices
- 6.3 No smoking or vaping
- 6.4 Reflective Flame-Resistant Clothing

7 On site Requirements

On the day of your visit, be reminded of the following.

- 7.1 Full PPE to be worn. These must include
 - Hard hat
 - Hi-visibility vests
 - Safety shoes
 - Safety glasses
 - Fire retardant clothing (for access to Berth 2)
 - Life vests (for activities within 6 ft of quay wall)
 - Face masks
- 7.2 Observation of speed limit – **20 km/hr** within port compound
 - decelerate to **10 km/hr** across dock area
- 7.3 All materials, equipment or cargo entering or leaving the Port of Brighton must be Customs approved for entry. Please ensure you have a copy of the stamped customs document and a description of all items needing entry.



CONTACT US

Office Address

La Brea Industrial Development Company Ltd (LABIDCO)

Estate Corridor Road Extension

Brighton Port, Material Storage & Handling Facility La Brea Industrial Estate

Brighton, La Brea.

Tel: (868) 648-8488, 8884

Fax: (868) 648-9319

Website – nationalenergy.tt